

Bildau & Bussmann



Contents

The Company	
Our Products	
1 Wood Windows	p. 11-12
1.1 Wood with Aluminum Drip Sill	p. 19-20
1.2 Wood with Historic Profile	p. 25-26
2 Aluminum-Clad Windows	p. 33-34
2.1 Linea Classic	p. 35-36
2.2 Linea Quadrata	p. 41-42
2.3 Linea Plana	p. 49-50
3 Door Systems	p. 57-58
3.1 Entry Doors	p. 59-60
3.2 Lift and Slide Doors	p. 63-64
3.3 Tilt and Slide Doors	p. 75-76
3.4 Bi-Fold Doors	p. 85-86



The Company



A Family Business

Bildau & Bussmann was founded in 1987 by Martin Bildau and Ludger Bussmann as a joinery in the former western part of Berlin. In 1993 Ludger Bussmann left the company and Martin Bildau has been leading the growing corporation ever since.

In its early days the company was focused on historic landmark preservation and it remains a strong segment of our business until today. We have kept traditional manufacturing processes of windows and doors in accordance to historical records as a separate line of production within our company. A highlight in this sector – especially as a Berlin-based enterprise – has been the construction of the portal windows and entry doors for the historically restored Berlin City Palace 2016 – 2019. The reconstruction of these windows is the most ambitious project in the European wood window sector to date.

Since 1995 we have vastly expanded our manufacturing capabilities and added several production lines for modern wood and aluminum clad windows with double or triple insulated glazing units. This wide-ranging production capacity positions Bildau & Bussmann as one of the top manufacturers of timber window and door products worldwide. We have, on the other hand, decided not to expand our product palette in the direction of, i.a., UPVC or full aluminum as frame material. To us, wood is the superior building material both from an ecological as well as an aesthetic perspective. For this reason, we choose to dedicate all our energy to this forward-looking segment of the market.

The expansion into markets outside of Germany has been a central company goal since 2003. Currently we are operating with our companies throughout Europe, North America, Asia and New Zealand.

In 2019 Michal Wasilewicz joined the company. As CEO of Bildau & Bussmann North America, he now manages all anglophone markets - with a special focus on high end residential as well as eco-conscious buildings. In 2016 and 2017 Maximilian and Felix Bildau respectively began expanding our digital competence. We see this as a key factor to all future investments. Besides bolstering our manufacturing capacities and improving our quality standards, digitalization facilitates our global goal of fluid, ever increasing customer-friendly relations.





Bildau & Bussmann has remained true to its roots in traditional craftsmanship and wood as the company's main building material. By focusing on wood and aluminium-clad products we have gained a great wealth of specialized expertise, enabling us to implement highly complex and bespoke designs.

As a family-owned and -operated company, we are more interested in long-term development than short-term gains. Sustainability is a key focus in every aspect of our business and another reason we have chosen to work exclusively with wood. This material is doubly climate friendly: trees bind the carbon dioxide in the atmosphere to form carbon in the wood. This is then bound long term when timber is used as a building material. Moreover, the production of wood windows emits less carbon dioxide than materials like UPVC.

In our production facilities, special measures such as our highly energy-efficient buildings, machinery and solar power keep our carbon footprint to the minimum. The ecological value of Bildau & Bussmann windows is far more sustainable from day one than any other fenestration product on the market. As all our windows and doors are custom made, we strive to find the perfect fit for every single project. We perceive ourselves as more than a mere window manufacturer: our greatest strength – aside from the craftsmanship – lies in our technical expertise and after sales service. We remain a true partner to our customers as opposed to a mere supplier. Our goal is always to establish and cultivate long-lasting customer relationships.

To work in an efficient, creative and productive manner, it is necessary to create a framework in which everyone feels welcome and heard – this applies to our customers as well as to our employees. As an employer we seek to create a cooperative environment within our team. By pursuing an inclusive family-oriented staffing policy and establishing a flat

Corporate Philosophy

hierarchy, we are committed to diversity and equality within our staff. To us this is the key to finding fresh and unconventional approaches to our wide range of projects.

A great challenge in international business is not only overcoming language barriers but also crossing cultural divides. This is why it is important to us that our employees are indigenous to the markets we operate in. It ensures our customers are fully understood and connected with. Projects are always seen and elaborated in the context of their environment, so that we may find the best possible outcome for each individual project.

Besides high personnel expenditures we invest heavily in the development of soft-ware to offer our customers all the advantages of digitalization. This ensures efficient and accurate communication from the earliest stages of project planning to post-installation service.

City Palace, Humboldt Forum, Berlin, Germany







1. Wood Windows

Wood windows are our standard product and yet endlessly customizable. By using different types of wood – from pine to Siberian Larch and exotic species – they can be adapted into every conceivable types of projects. Made-to-measure profiles, a variety of options in finishes and impeccable craftsmanship make our windows unique showpieces, even when produced on a large scale.

Walden Pond, Thoreau Society, MA, USA.

Teton Village, WY, USA.





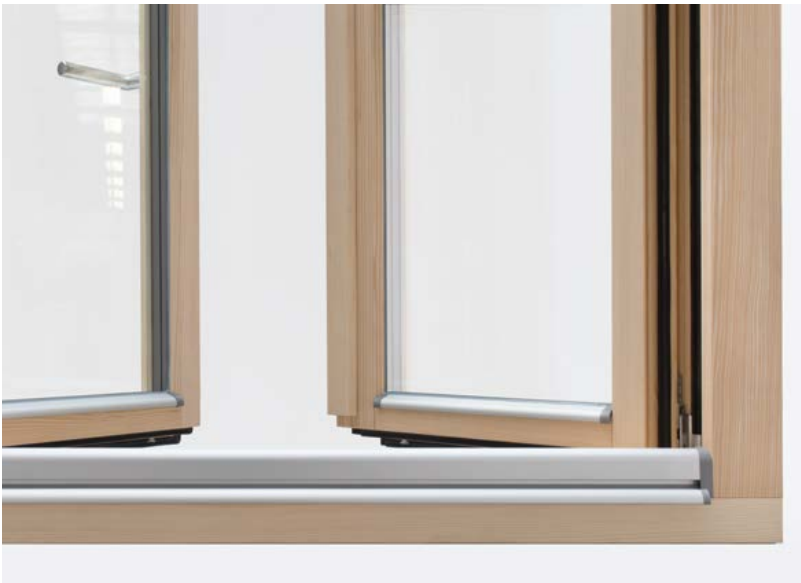
Marseilles, France



Chalucet Media Library,
Toulouse, France

1.1 Wood with Aluminum Drip Sill

The wood window with aluminum drip sill is the standard timber profile. It excels with its outstanding thermal performance, as well as air- and watertightness. By varying profile depths, widths and shapes, it can be used in any type of project.



Flying Mullion

The absence of a fixed post gives French casement windows a maximum opening area.



Protective Sash Profile

We offer protective sash profiles as an option. The aluminum profile covers the wood where water could build up and cause damage. The profile can be adapted in color to match the window.

Aluminum Drip Sill

The weather bar protects the window optmally from water damage. Even strong driving rains run off immediately, so that the wood is protected from moisture at its most vulnerable point.





Geneva, Switzerland



1.2 Timber with Historic Profile

Windows offer the biggest energy savings potential in when renovating old buildings, but it is also important to adapt to the structure itself. Our wood windows with a historic profile offer an all wood solution especially suited for restoration projects.

Muntins

Muntins can be provided as true divided lites (TDL) or simulated divided lites (SDL). Depending on the design they can also be set arched or diagonally.



Decorative Profiles

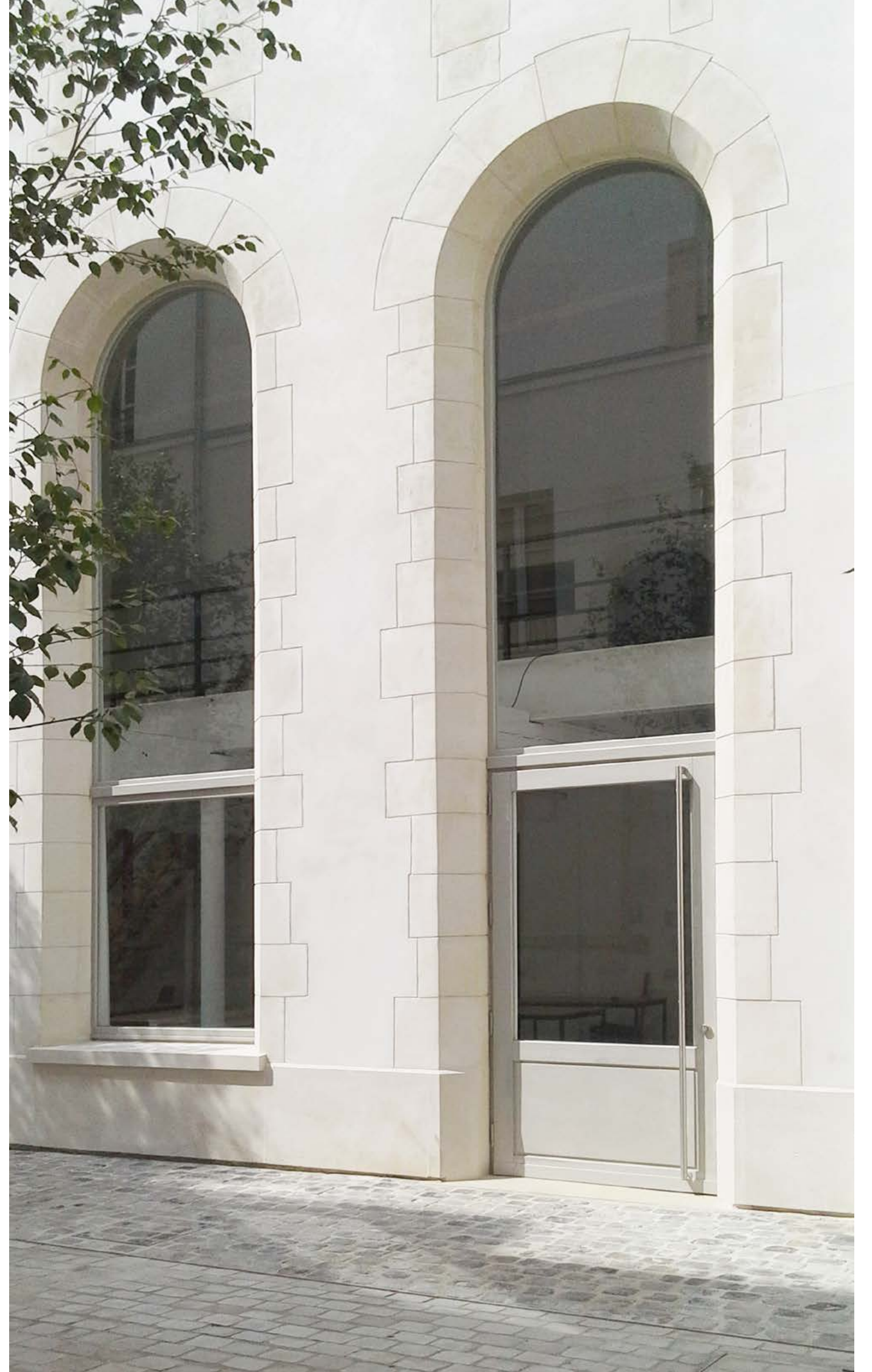
Decorative profiles give windows a unique look. They are handcrafted for custom designs and enhance a window's historical and cultural attributes.



Wood Drip Sill

The wooden drip nose directs water away from the sash and over the frame profile. This ensures that water cannot permeate the interior of the window. As rain drips off this profile water tightness is given with a full wood construction.





Paris, France







Our Products

2. Aluminum-Clad Windows

Aluminum-clad wood windows offer the luxury and coziness of wood on the interior and the longevity of an aluminum window on the exterior. The cladding makes this window extremely durable and low-maintenance, without sacrificing the luxury of having a natural wood product.

Jackson Hole, WY, USA

2.1 Linea Classic

With its timeless design the Linea Classic profile is aesthetically indistinguishable from a standard wood window. It is perfect for anyone seeking a traditional look with the comfort of a state of the art aluminum clad window.



Dry Glazing
Our aluminum-clad products are always glazed using gaskets to ensure consistent outcomes and guarantee water tightness. The gaskets are available in different colors.

Arches

The aluminum profiles can be bent and manipulated in many ways so that customized design ideas are not compromised. Even round, oval, or arched window types are feasible.



Profile Widths

Depending on the installation details, frame profiles of differing widths are available to ensure ideal connection to the building envelope. The windows are incorporated into the insulation plan in the best possible way.







Lefty Ranch, WY, USA

2.2 Linea Quadrata

The straight lines of the Linea Quadrata profile group are especially suited to modern architecture. The clarity of the lines combined with an offset sash gives this window a contemporary elegance.



Inner Sash Profiles

On the interior, the comfort of beautiful wood can be enjoyed. As with our full timber products the finish can be customized to your preference.

Interior Finish

On the interior, the comfort of beautiful wood can be enjoyed. As with our full timber products the finish can be customized to your preference.



Window Sills

The interior sash can be milled in four different variations to achieve a different looks – from ultra modern to more classical designs. It is possible to choose between our straight, tapered or curved options.





Stow, MA, USA





Brussels, Belgium



2.3 Linea Plana

For the profiles of the Linea Plana group the sash is flush with the exterior frame profile, thus achieving a stunningly minimalist look.



Flush Sash Profiles

This sash profile is designed to partially hold the insulated glazing unit. This moves the sash towards the exterior and creates the illusion of a flush window.

Continuous Window Fittings

All our tilt-turn windows have locking points over the entire circumference to ensure tightness and prevent warping. As an option they can be ordered in Resistance Class 1 and 2.



Sealing Levels

Two sealing levels in the sash rebate create separate climate zones to prevent build-up of condensation.





Jackson Hole, WY, USA





Wakefield, MA, USA



Berlin, Germany



Our Products

3. Door Systems

Doors embody the transition from interior to exterior. They can open spaces as sliding elements or close buildings as entry doors. In all capacities they should protect and invite simultaneously.

3.1 Entry Doors

The entry door is the most prominent opening of any house. This is why our entry doors are made to measure and customized to individual designs. Anything from extravagant portals to minimalist glazed doors is feasible.



Lock

The utilization of doors is diverse so that we offer a vast array of locks. Any locking system can be used ranging from economic single locks to motorized locks with panic function.

Constructions

Entry doors can be combined with most other types of window or door elements.



Threshold

Our entry doors can be constructed with different types of thresholds depending on installation details and customer preference. We offer thermally broken solutions and ADA compliance.





Jackson Hole, WY, USA

3.2 Lift and Slide Doors

Lift and slide doors are the gentle giants of our product range. They can often replace entire walls with spectacular panoramic views. When open, they offer seamless transition from interior to exterior. Thanks to the lifting gears, sash weights with up to 400 kg (880 lbs) can be moved with ease.

Berlin, Germany





Stopper

Stoppers control the impact of the sash when opened, preventing accidents and needless damage. They are available in different colors.



Brush Gaskets

Brush gaskets between sashes ensure a constant and cozy climate on the interior while large glazed areas give the impression of being outdoors.



Guide Rails

The upper guide rails prevent the sash from being levered out of the frame. Additional anti-burglary hardware can be installed upon request.

Locking Points

Multiple locking points exert continual pressure on the door when closed. This maintains the original shape of the sash and prevents warping in the long run.



Handles

Lift and slide door handles from a large variety of manufacturers are available - there is something to suit every taste.



Threshold

Depending on the installation, a wide range of thresholds are available. This allows us to fulfill different thermal and accessibility requirements.



Geneva, Switzerland





Lexington, MA, USA

3.3 Tilt and Slide Doors

Tilt and slide doors combine the advantages of tilt-turn windows and sliding elements. The continuous fittings provide excellent thermal performance and tightness. At the same time, it is possible to slide part of the element away without it occupying space in the room. For light ventilation the tilt function can be used.

Tilt Function

The tilt function allows passive airflow for ventilation in these sliding elements. This warrants higher security and better air quality.



Parallel Opening

The active sash is lead parallel to the fixed sash. A minimum of space on the interior is necessary to create this opening.



High Sash Weights

Large, heavy elements are fitted with a power closer so that the sash is pulled against the gasket evenly. This prevents warping and air or water penetration.







City Palace, Humboldt Forum, Berlin, Germany



City Palace,
Humboldt Forum,
Berlin, Germany





City Palace,
Humboldt Forum,
Berlin, Germany



3.4 Bi-Fold Doors

Folding doors have the advantage that all sashes can be pushed away completely. They are the ideal intersection between interior and exterior. Unlike other sliding elements, folding doors do not need a fixed sash so that a room can be fully opened.

Opening Schemes

The bi-fold doors can be manufactured with up to 8 sashes. Numerous configuration options are available. It is possible for example to use one sash as an opening door, thus avoiding having to open the entire element to step outside.

Pull Handles

With pull handles it is possible to easily open the bi-fold elements. They can be customized in color and surface.



Homogenous Design

Thanks to our hardware and profiles the folding elements have a symmetric design with equal glazing widths and slim wood profiles.







Hale Lodge, WY, USA



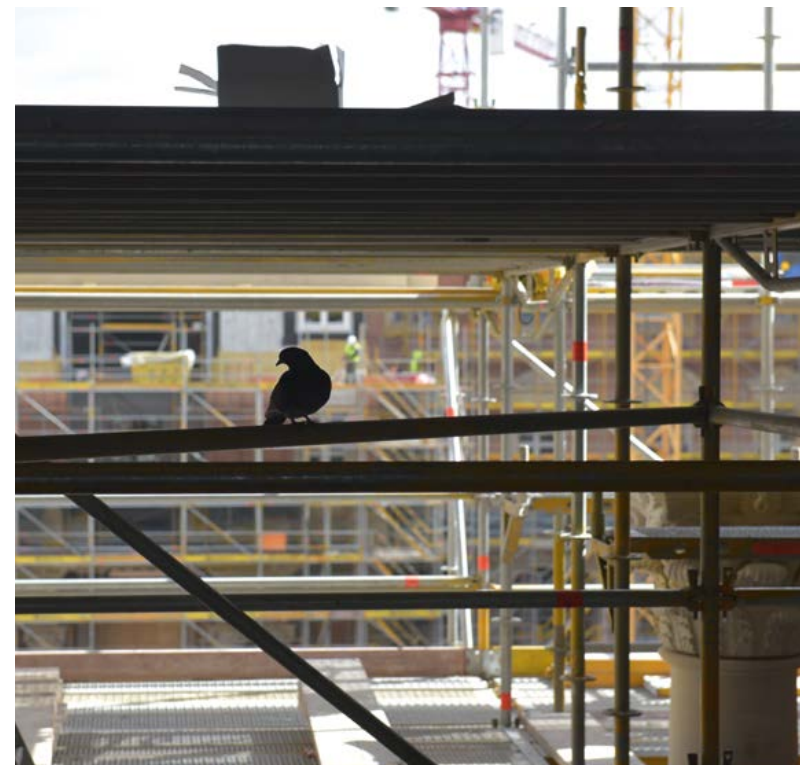
Hale Lodge, WY, USA



The Window

Windows offer insights and outlooks. They are the boundary of interior and exterior, the divide between private and public.

Not only do windows provide a building with daylight, they are also an essential part of the structure and design. It is not without reason that Le Corbusier has said that the history of architecture revolves around the window. It has always been a central element of construction. This legacy informs how we plan and build our products as they are the most elementary parts of any building. As such they must impeccably suit all aesthetic and technical requirements of the customer.



Berlin, Germany



Graphic design and layout: Jutta Henglein-Bildau
Text: Linda Bildau
Images:
All pictures: © Jutta Henglein-Bildau
Page 15-16, © V.Tregan
Page 17-18 © Serge Demailly
Page 23-24, 87-88 © Max Bildau
Page 27-28 © Stéphane Pallier
Page 29-30 © Yann Audic
Page 31-32, 33-34 © Agnello
Page 45-46, 47-48 © Georges De Kinder
Page 77-78 © Audrey Hall
Page 89, 91-92 © Matthew Millman

© Bildau & Bussmann

